



## Chelsea

A quality CaraCo home built for Family Living. The main floor offers an open concept design with a Formal Dining Room. Upstairs, the Master Bedroom boasts a Walk-In closet and a luxurious Ensuite.

3-4 Bedroom 2 Storey  
2,075sqft

Come Home to  
**CARACO**

Development Corporation

[www.caraco.net](http://www.caraco.net)



Artist Concept

*Elevation 'B'*

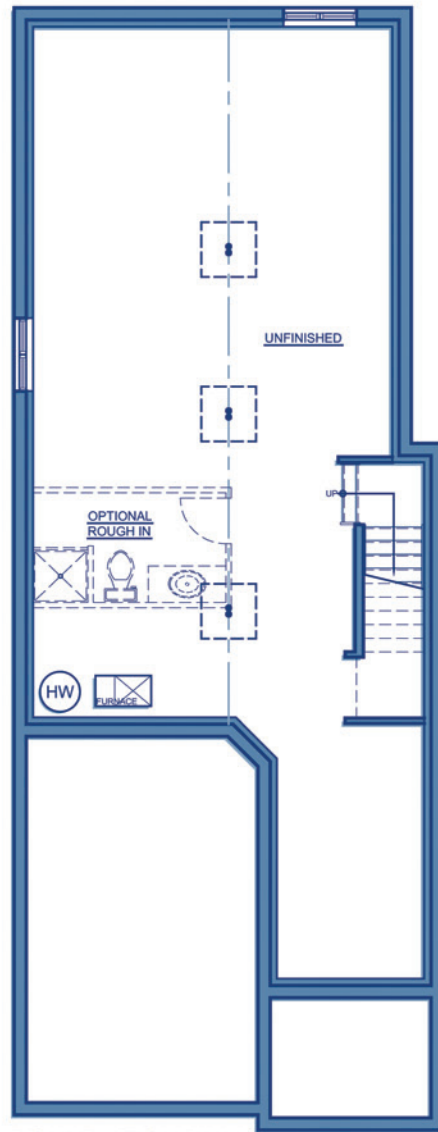
The  
**Loyalist**  
Series



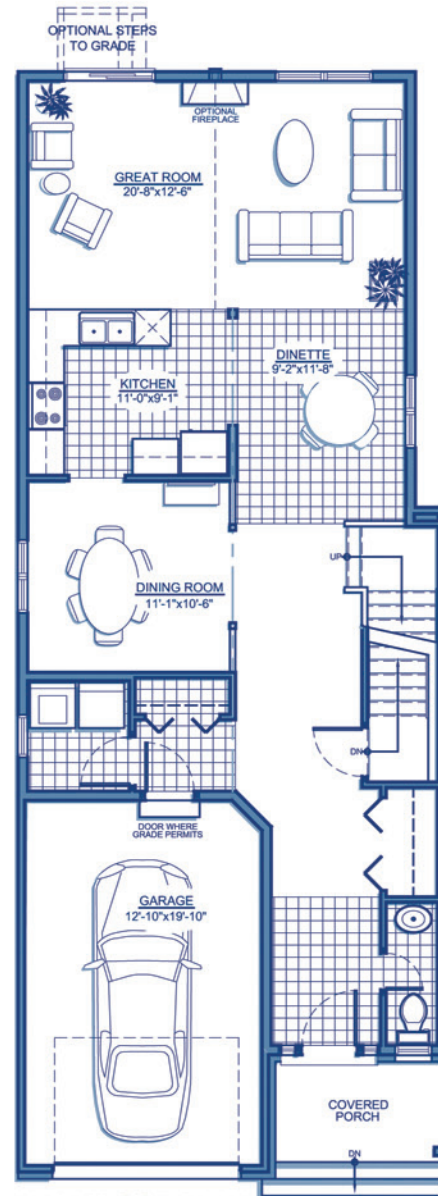
Artist Concept

*Elevation 'A'*

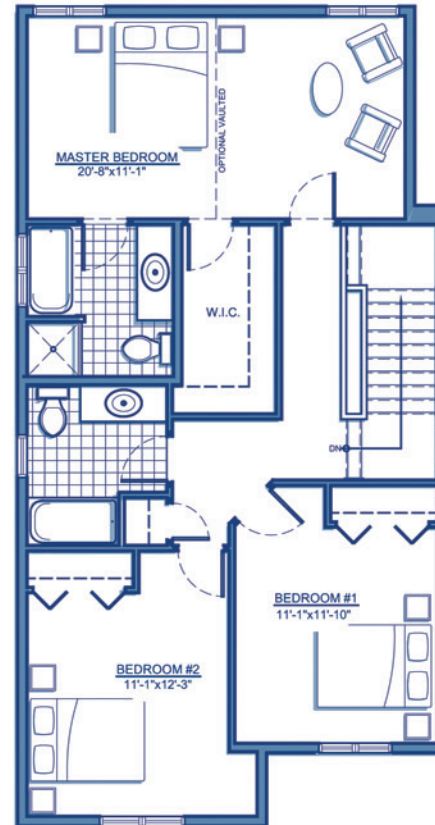
The  
*Loyalist*  
Series

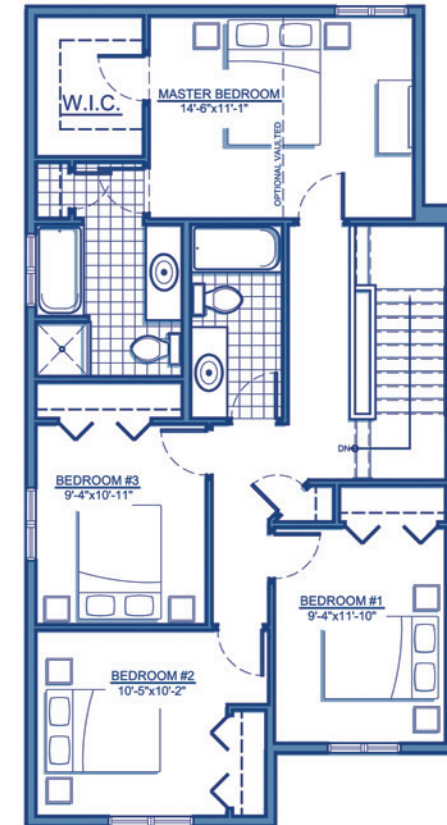
FOUNDATION PLAN



MAIN FLOOR PLAN



SECOND FLOOR PLAN  
3 BEDROOM LAYOUT



SECOND FLOOR PLAN  
4 BEDROOM LAYOUT

RENDERINGS, PLANS AND DIMENSIONS ARE APPROXIMATE AND SUBJECT TO CHANGE AT THE DISCRETION OF THE VENDOR. ACTUAL USABLE FLOOR SPACE MAY VARY FROM THE STATED FLOOR AREA. SUBJECT TO ERRORS AND OMISSIONS EXCEPTED. UPDATED 10/20/2011



*Chelsea*

3-4 Bedroom 2 Storey  
2,075sqft

Come Home to

**CARACO**

Development Corporation

[www.caraco.net](http://www.caraco.net)