



Parkridge

This spacious, open concept home is perfect for family living. Featuring a bright morning room, formal dining room and a large kitchen with a standard island. Upstairs the oversized master bedroom boasts a large walk-in closet and luxurious ensuite with soaker tub and a 5ft shower.

4 Bedroom 2 Storey
2,610sqft

Come Home to
CARACO

Development Corporation

www.caraco.net



Artist's Concept

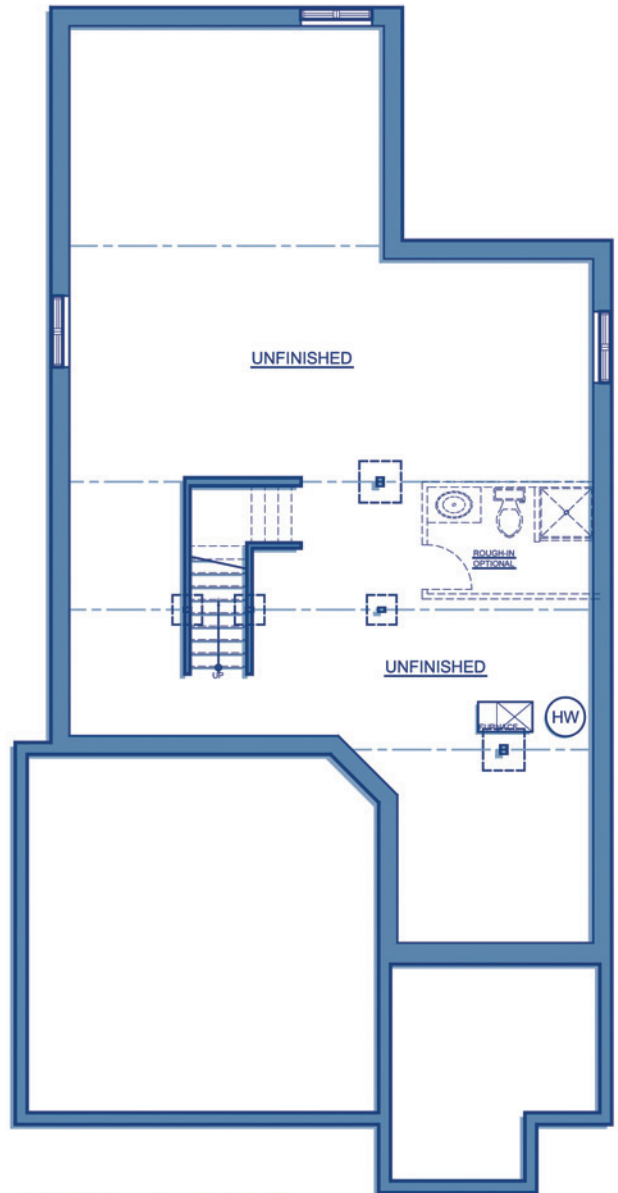
Elevation 'A'

The
Heritage
Series

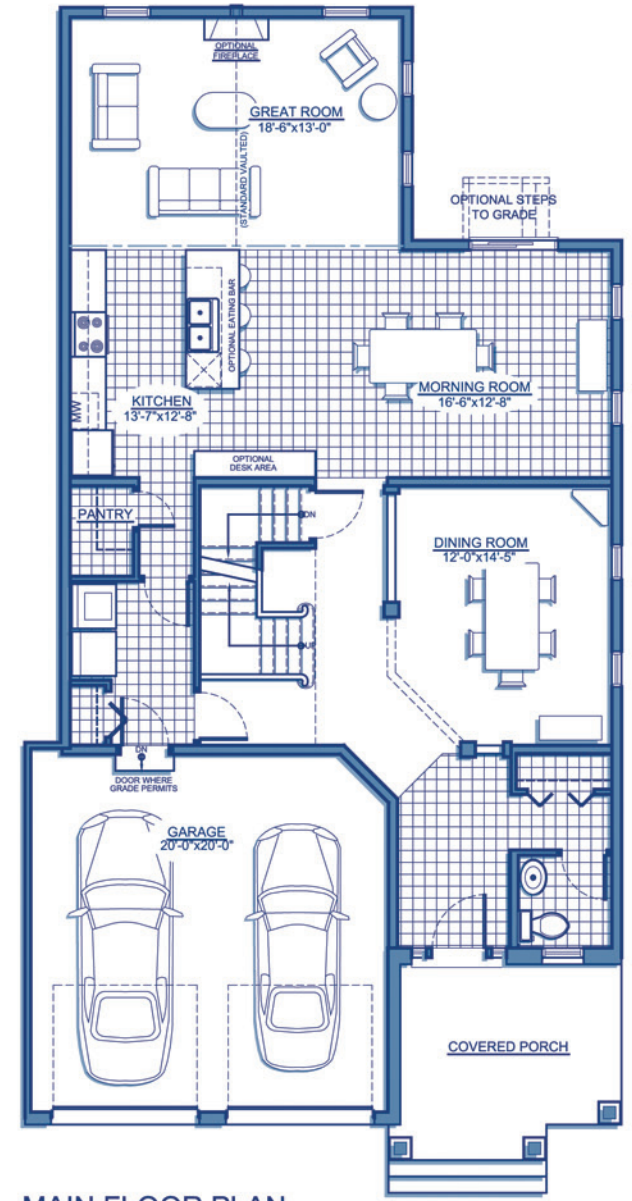


Artist Concept

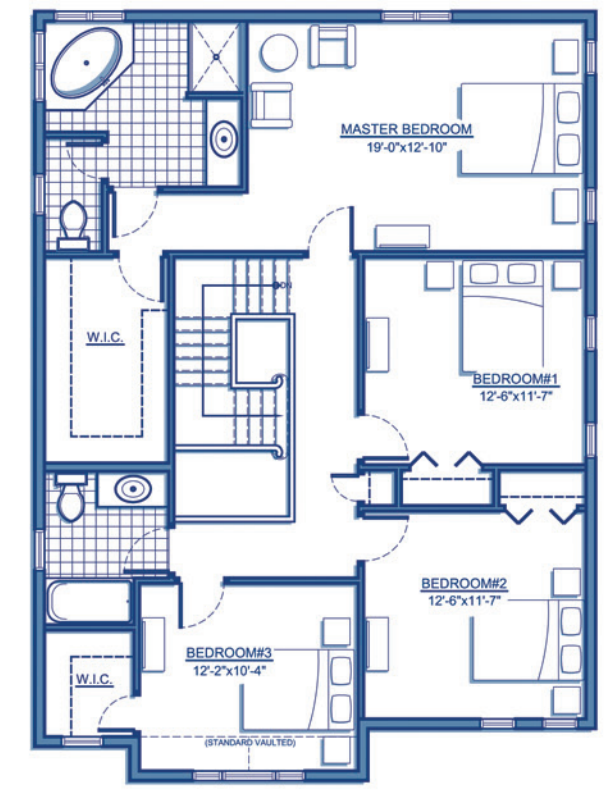
Elevation 'B'



FOUNDATION PLAN



MAIN FLOOR PLAN



SECOND FLOOR PLAN

RENDERINGS, PLANS AND DIMENSIONS ARE APPROXIMATE AND SUBJECT TO CHANGE AT THE DISCRETION OF THE VENDOR. ACTUAL USABLE FLOOR SPACE MAY VARY FROM THE STATED FLOOR AREA. SUBJECT TO ERRORS AND OMISSIONS EXCEPTED. UPDATED 03/16/2011



Parkridge
 4 Bedroom 2 Storey
 2,610sqft

Come Home to **CARACO** www.caraco.net
 Development Corporation