

Model Home
Lot 6, Parkridge
1040 Woodhaven Drive

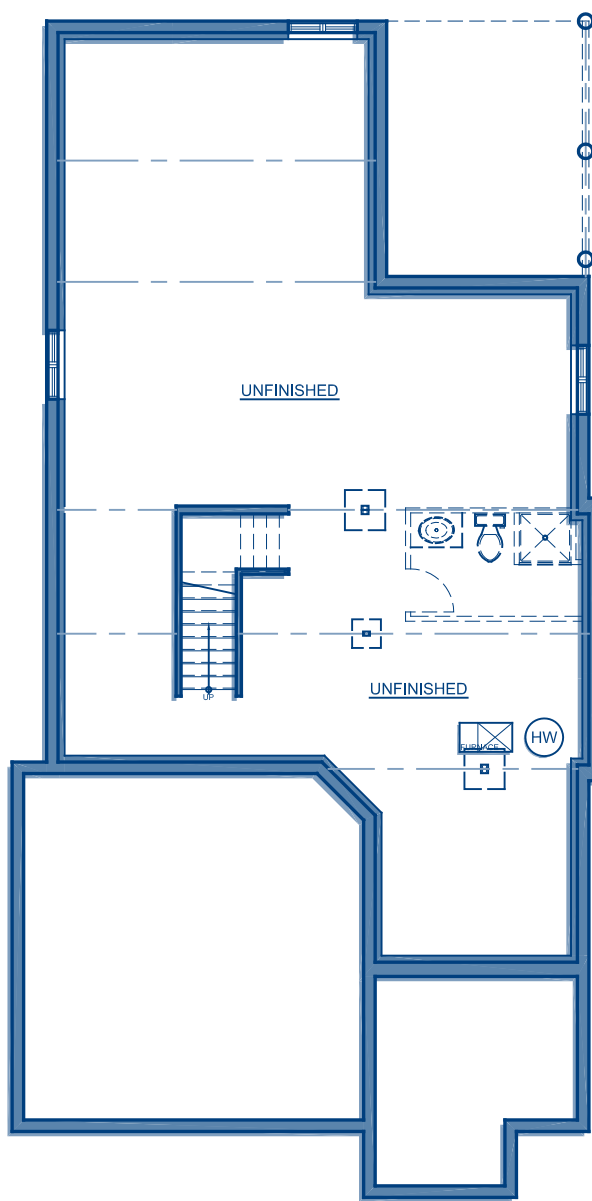


Boasting a spectacular Kitchen with an oversized island and a walk-in pantry, this quality CaraCo design offers plenty of space for entertaining. The bright Family Room has standard vaulted ceilings and large windows overlooking the backyard. Spoil yourself in the luxurious Master Suite with an oversized shower and massive closet.

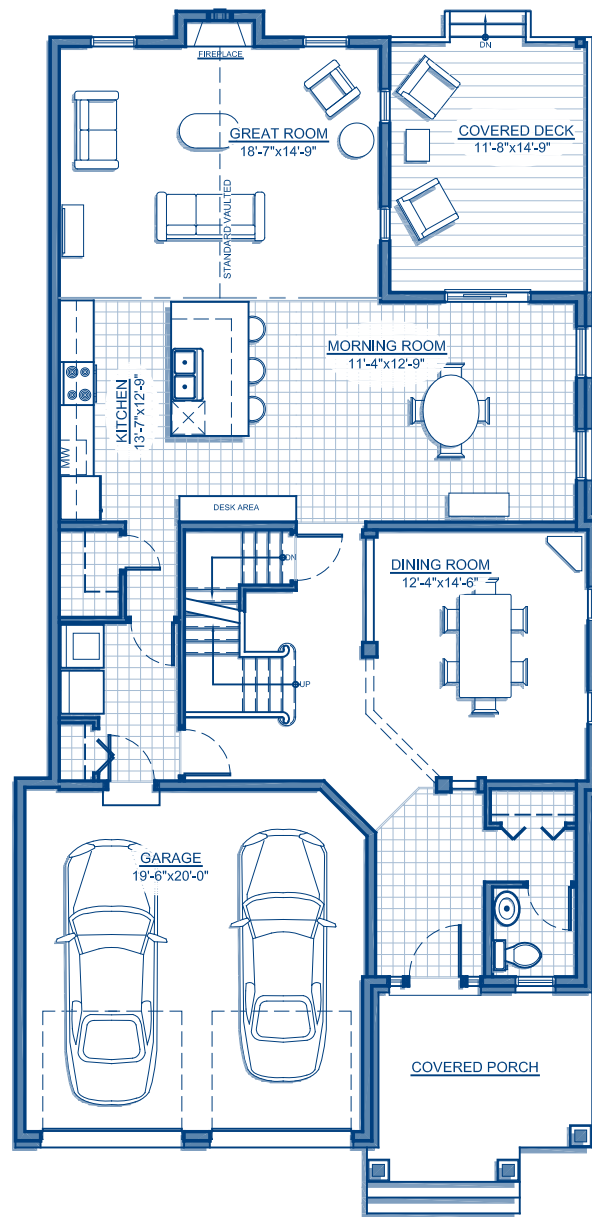
Upgraded Features Include:

3 PC ROUGH-IN
PAINT UPGRADE (3 COLOURS)
KITCHEN UPGRADES
6 FT. PATIO DOOR
9 POT LIGHTS
FABER 36" TENDER CANOPY RANGEHOOD
PANTRY DOOR(FROSTED)
XENON UNDERCABINET LIGHTING
TILE BACKSPLASH
PUCK LIGHTING (DESK)
KNOCK DOWN STIPPLE
UPGRADED COLUMNS & PANELING TO DINING ROOM
UPGRADE BASEBOARDS
UPGRADE WINDOW/DOOR CASINGS
LEVER DOOR HANDLES
LIGHTING UPGRADES
CERAMIC FLOOR TILE
HARDWOOD FLOORING
VENTS FINISHED TO MATCH HDWD FLOOR
MAPLE STAIRS/PAINTED RISERS
ONE PIECE TUB UNIT
PLUMBING FIXTURES
TOWEL BARS/TOILET PAPER HOLDERS
UPGRADED MIRRORS
REAR DECK WITH ROOF
WINDOW INSERTS TO GARAGE DOORS
FIREPLACE WITH CULTURED STONE
CLEAR FLOOR SEALER TO BASEMENT FLOOR
EXTERIOR COLUMNS
LUTRON RADIO ra2 STARTER PACKAGE
CEDAR SHAKE -WEATHERED COLLECTION
BRICK & STONE COMBINATION/SIDE YARD
ADDITIONAL 100SQFT ONTO HOUSE

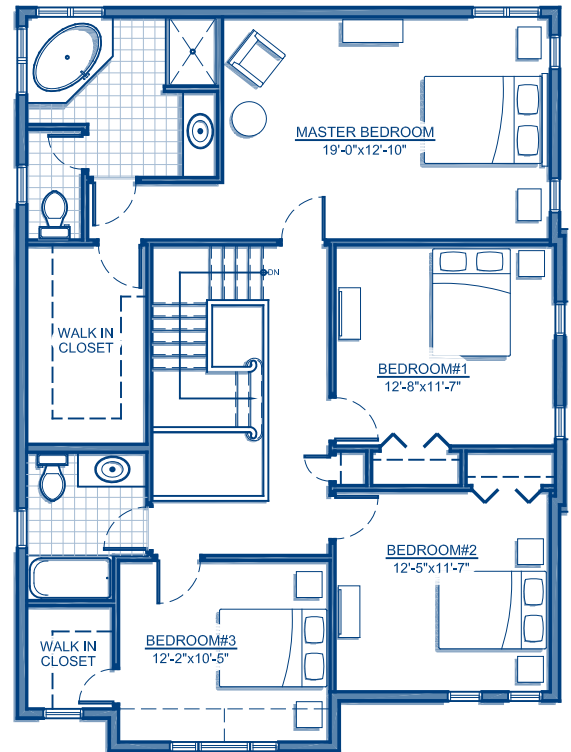
E. & E.O. April 20, 2011



FOUNDATION PLAN



MAIN FLOOR PLAN



SECOND FLOOR PLAN

Lot 6, Parkridge 2,710sqft.

Come Home to
CARACO
 Development Corporation
www.caraco.net

RENDERING, PLANS AND DIMENSIONS ARE APPROXIMATE AND SUBJECT TO CHANGE AT THE DISCRETION OF THE VENDOR. ACTUAL USABLE FLOOR SPACE MAY VARY FROM THE STATED FLOOR AREA. SUBJECT TO ERRORS AND OMISSIONS EXCEPTED.