

# GREENWOOD

## PARK WEST

### Nightingale

Comfortable living offering a 2 or 3 bedroom layout. A large Foyer leads to an oversized Kitchen, Dinette and Great Room with optional fireplace. The oversized Master Bedroom offers a full Ensuite Bathroom and Walk-In closet.

2-3 Bdrm Bungalow  
1,550sqft

Come Home to  
**CARACO**

Development Corporation

[www.caraco.net](http://www.caraco.net)



Artist Concept

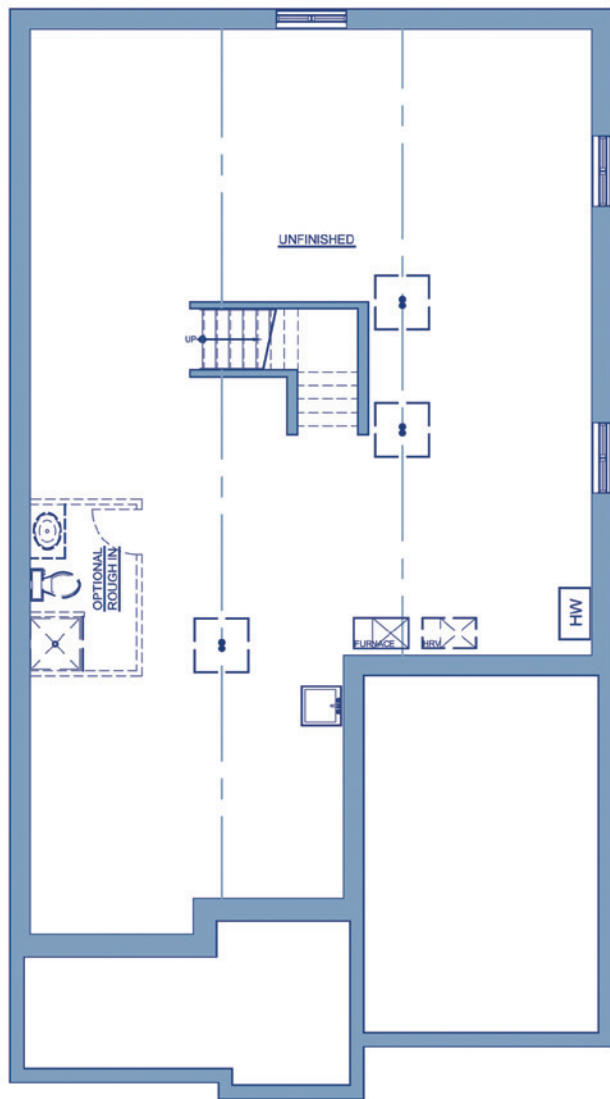
Elevation 'A'

The  
**Heritage**  
Series

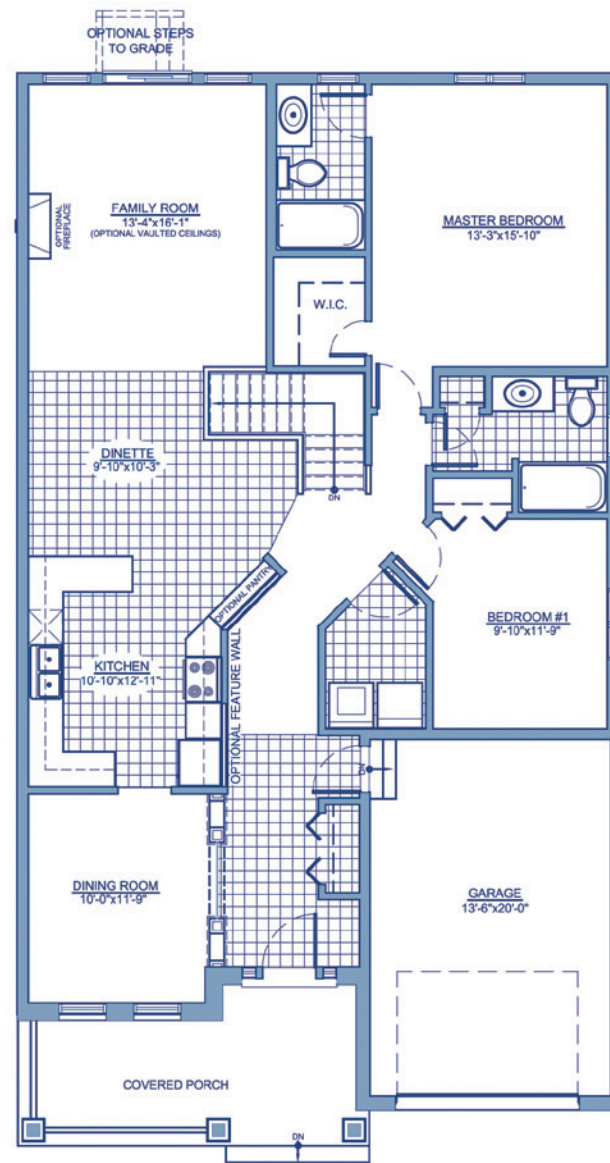


Artist Concept

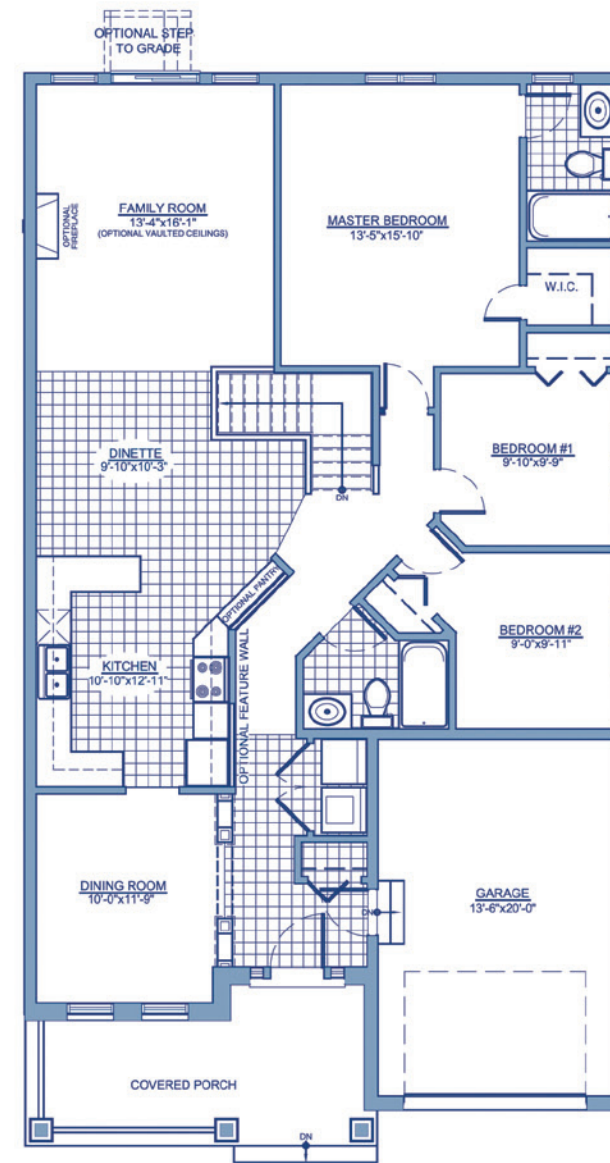
Elevation 'B'



FOUNDATION PLAN



ELEVATION 'B' MAIN FLOOR PLAN (2 BEDROOM)



ELEVATION 'B' MAIN FLOOR PLAN (3 BEDROOM)



RENDERINGS, PLANS AND DIMENSIONS ARE APPROXIMATE AND SUBJECT TO CHANGE AT THE DISCRETION OF THE VENDOR. ACTUAL USABLE FLOOR SPACE MAY VARY FROM THE STATED FLOOR AREA. SUBJECT TO ERRORS AND OMISSIONS EXCEPTED. UPDATED 03/12/2011



**Nightingale**  
2-3 Bdrm Bungalow  
1,550sqft

Come Home to



[www.caraco.net](http://www.caraco.net)